



Pattern: Majestic Ashlar



Ashlar Slate

Product Num. BST4000

Recommended Contractor Set: 12 Rigid, 2 Flex, 1 Skin, 1 Roller Sleeve

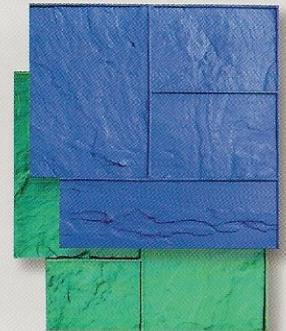
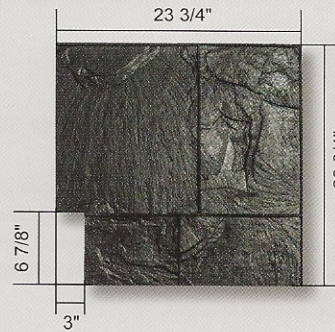
Suggested Touch-up and Detailing Tools:

Touch-up Texture Skin: Italian Slate – BST7218

Touch-up Texture Roller Sleeve: Italian Slate – BSTR0972

Chisels: 2", 4", & 8" **Touch-up Wheel:** 3/16"

Grout Line Width: 3/16"-5/16"



© Butterfield Color, Inc.



Majestic Ashlar

Product Num. BST4100

Recommended Contractor Set: 9 Rigid, 2 Flex, 1 Skin, 1 Roller Sleeve

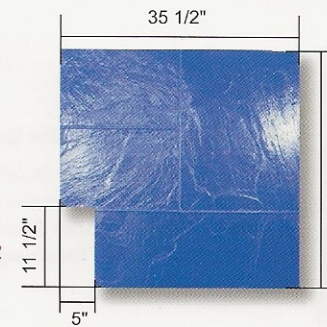
Suggested Touch-up and Detailing Tools:

Touch-up Texture Skin: Italian Slate – BST7218

Touch-up Texture Roller Sleeve: Italian Slate – BSTR0972

Chisels: 2", 4", & 8" **Touch-up Wheel:** 3/16"

Grout Line Width: 1/4"-3/8"



© Butterfield Color, Inc.



Cottage Slate

Product Num. BST4400

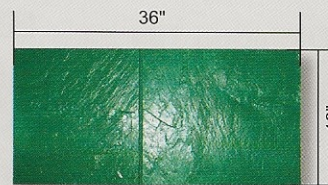
Recommended Contractor Set: 9 Rigid, 2 Flex, 1 Skin, 1 Roller Sleeve

Suggested Touch-up and Detailing Tools:

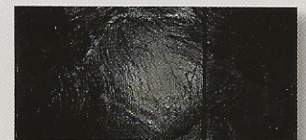
Touch-up Texture Skin: Italian Slate – BST7218

Touch-up Texture Roller Sleeve: Italian Slate – BSTR0972

Chisels: 2", 4", & 8" **Touch-up Wheel:** 3/16"



Grout Line Width: 3/8"-1/2"





3' x 3' Slate

Product Num. BST4403

Grout Line Width: 3/16"-3/8"

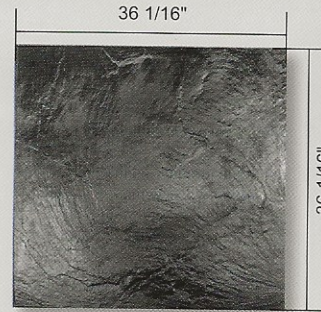
Recommended Contractor Set: 9 Rigid, 2 Flex, 1 Skin, 1 Roller Sleeve

Suggested Touch-up and Detailing Tools:

Touch-up Texture Skin: Italian Slate – BST7218

Touch-up Texture Roller Sleeve: Italian Slate – BSTR0972

Chisels: 2", 4", 8", & 12" **Touch-up Wheel:** 3/16"



18" x 18" Slate

Product Num. BST4400BL

Grout Line Width: 3/8"-1/2"

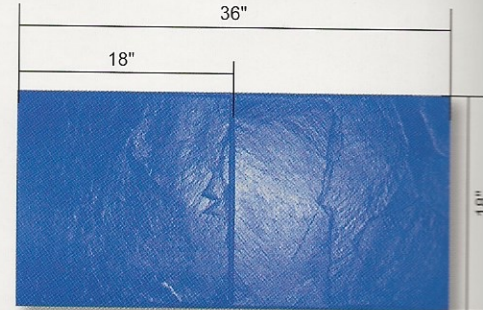
Recommended Contractor Set: 9 Rigid, 2 Flex, 1 Skin, 1 Roller Sleeve

Suggested Touch-up and Detailing Tools:

Touch-up Texture Skin: Italian Slate – BST7218

Touch-up Texture Roller Sleeve: Italian Slate – BSTR0972

Chisels: 2", 4", & 8" **Touch-up Wheel:** 3/16"



6" x 6" Slate

Product Num. BST4350

Grout Line Width: 3/16"-5/16"

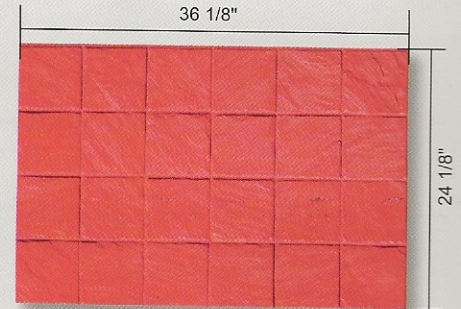
Recommended Contractor Set: 9 Rigid, 2 Flex, 1 Skin, 1 Roller Sleeve

Suggested Touch-up and Detailing Tools:

Touch-up Texture Skin: Italian Slate – BST7218

Touch-up Texture Roller Sleeve: Italian Slate – BSTR0972

Chisels: 2", 4", & 8" **Touch-up Wheel:** 3/16"



12" x 12" Slate

Product Num. BST4300

Grout Line Width: 1/4"-3/8"

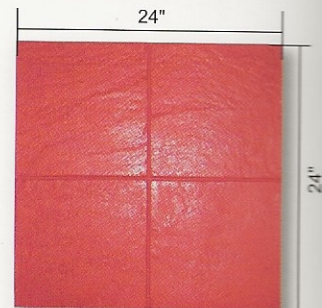
Recommended Contractor Set: 13 Rigid, 2 Flex, 1 Skin, 1 Roller Sleeve

Suggested Touch-up and Detailing Tools:

Touch-up Texture Skin: Italian Slate – BST7218

Touch-up Texture Roller Sleeve: Italian Slate – BSTR0972

Chisels: 2", 4", & 8" **Touch-up Wheel:** 3/16"



Diamond Tile

Product Num. BST4500

Grout Line Width: 1/4"

Recommended Contractor Set: 8 Rigid, 1 Flex, 1 Skin, 1 Roller Sleeve

Suggested Touch-up and Detailing Tools:

Touch-up Texture Skin: Bluestone – BST20018

Touch-up Texture Roller Sleeve: Bluestone – BSTR0920

Chisels: 2", 4", & 8" **Touch-up Wheel:** 3/16"

