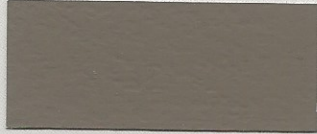


1 BAG PER 2 YARDS

1 BAG PER 1 YARD

2 BAGS PER 1 YARD

3 BAGS PER 1 YARD



078 Chaparral



Pueblo Brown



Calandria Brown



Gravel Brown



084 Hay Fields



Wheat Fields



Amber Fields



Rust Fields



117 Spring Rose



Summer Rose



Winter Rose



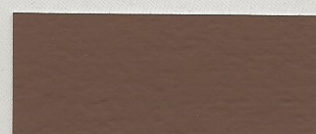
Red Rose



130 Latte



Chocolate



Cappuccino



Hot Cocoa



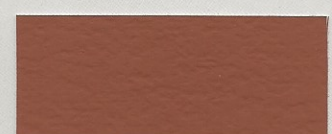
134 Southern Clay



Santa Fe Clay



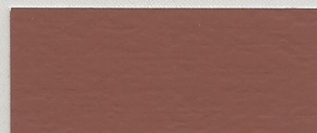
Roman Clay



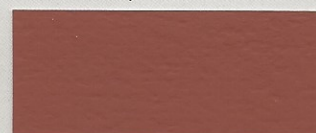
Ceramic Clay



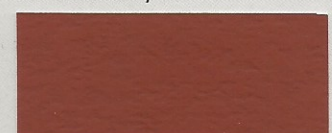
160 Sunset Red



Sunrise Red



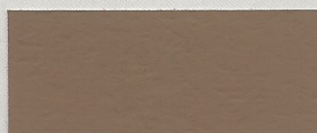
Red Brick



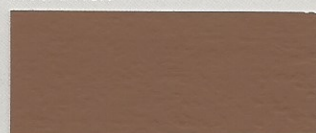
Iron Brick



237 Sand Buff



Coronado Buff



Egyptian Dunes



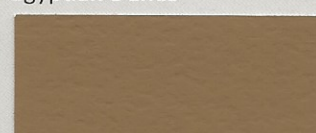
Summer Dunes



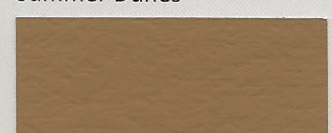
447 Prairie Beige



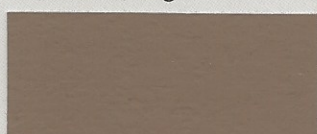
Schooner Beige



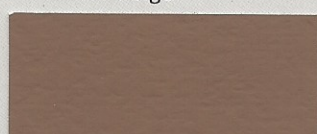
Moroccan Beige



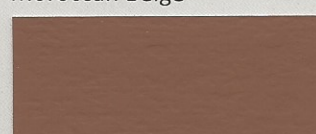
Horizon Beige



641 Taos Tan



Aztec Tan



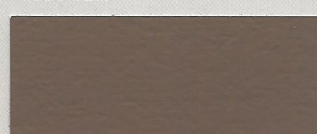
Southwest Tan



New Mexico Tan



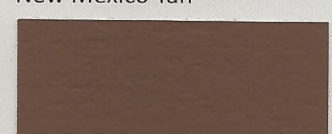
677 Soft Chestnut



Ripe Chestnut



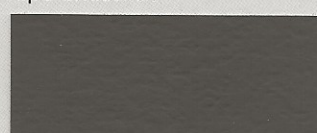
Roast Chestnut



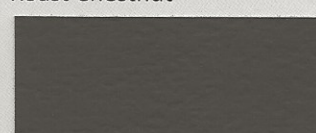
Plum Chestnut



860 Metallic Gray



Cobble Gray



London Gray



Thunder Gray

Many things can affect the appearance of color. For best color matching results, a representative job site sample, should be cast using materials and finishing techniques that will be used on the project.

Colors shown on this chart represent formulations using medium gray cement and sealed with solvent based SCOFIELD® Cure Seal™ 700. Variations can be expected due to differences in cement, aggregates and method of application. NOTE: When using lower color loadings, such as one bag per two yards, the color of the cement and sand have a more pronounced influence on the final color resulting in a greater chance of color variation.